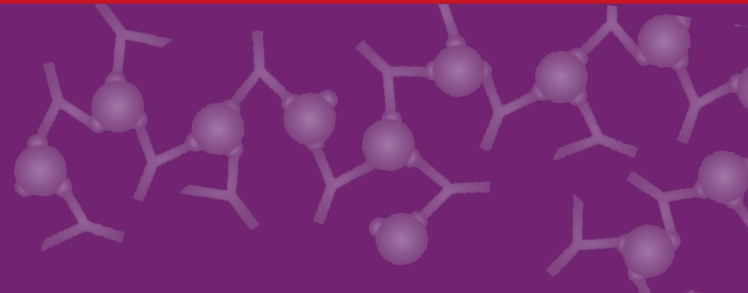


Really Good Antibodies



# Secondary Antibodies

Over 670 Anti-Mouse, Rabbit, Goat and Rat Secondary Antibodies



bioNova científica, s.l. • Tel.: 915 515 403 • Fax: 914 334 545  
e-mail: [info@bionova.es](mailto:info@bionova.es) • [www.bionova.es](http://www.bionova.es)



Cientisol • Tel.: 981 936 338  
e-mail: [info@cientisol.com](mailto:info@cientisol.com) • [www.cientisol.com](http://www.cientisol.com)

Bethyl Laboratories, Inc. has been dedicated to supporting scientific discovery through its qualified antibody products and custom antibody services since its founding in 1972. Every antibody that Bethyl sells has been manufactured to exacting standards at its sole location in Montgomery, Texas, and has been validated in-house by Bethyl's team of scientists.



Currently, Bethyl's portfolio consists of over 7,150 catalog products; offering over 5,700 primary antibodies targeting more than 2,700 proteins and 1,450 secondary antibodies raised against immunoglobulins from over 25 species.

Bethyl's secondary antibodies have been antigen affinity-purified and are available in a variety of formats: whole IgG, F(ab')<sub>2</sub> fragment and Fab fragment (not listed below). Bethyl also provides secondary antibodies that have been highly cross-adsorbed (highly x-Adsorbed) to reduce cross-reactivity, including all of the F(ab')<sub>2</sub> fragment antibodies.

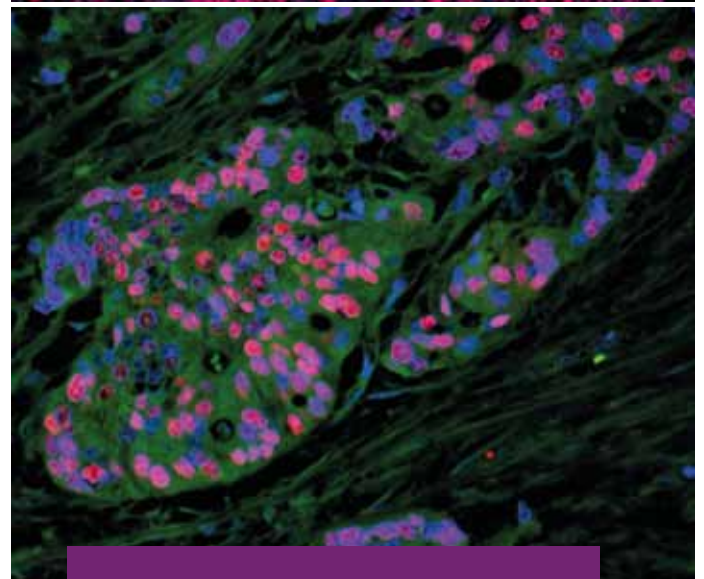
Bethyl secondary antibodies are provided pre-conjugated to: biotin, horseradish peroxidase (HRP), alkaline phosphatase (Alk. Phos.), Cyanine dyes, DyLight® dyes, FITC and R-phycoerythrin (R-PE). Unconjugated secondaries are also available (not listed below).

Below is a sampling of some of Bethyl's more than 670 anti-mouse, -rabbit, -goat and -rat secondary antibodies. Please visit [www.bethyl.com/search/Secondary\\_Antibody](http://www.bethyl.com/search/Secondary_Antibody) for a complete listing of Bethyl's 1,450 secondary antibodies.

## Anti-Mouse Secondary Antibodies

Donkey anti-Mouse				
Target	Conjugate	Whole IgG	Highly x-Adsorbed	F(ab') <sub>2</sub> Fragment
IgG (H+L)	Biotin	A90-137B	A90-337B	A90-142B
IgG (H+L)	Alk. Phos.	A90-137AP	A90-337AP	A90-242AP
IgG (H+L)	HRP	A90-137P	A90-337P	A90-242P
IgG (H+L)	DyLight® 350		A90-337D1	
IgG (H+L)	DyLight® 488	A90-137D2	A90-337D2	A90-242D2
IgG (H+L)	DyLight® 550	A90-137D3	A90-337D3	A90-242D3
IgG (H+L)	DyLight® 594	A90-137D4	A90-337D4	A90-242D4
IgG (H+L)	DyLight® 650	A90-137D5	A90-337D5	A90-242D5
IgG (H+L)	DyLight® 680		A90-337D6	
IgG (H+L)	DyLight® 755		A90-337D7	
IgG (H+L)	DyLight® 800		A90-337D8	
IgG (H+L)	FITC	A90-137F	A90-337F	A90-242F
IgG (H+L)	R-PE		A90-242PE	
Goat anti-Mouse				
Target	Conjugate	Whole IgG	Highly x-Adsorbed	F(ab') <sub>2</sub> Fragment
IgG (H+L)	Agarose	A90-116S		
IgG (H+L)	Biotin	A90-116B	A90-516B	A90-238B
IgG (H+L)	Alk. Phos.	A90-116AP	A90-516AP	A90-238AP
IgG (H+L)	HRP	A90-116P	A90-516P	A90-238P
IgG (H+L)	Cy2®		A90-516C2	
IgG (H+L)	Cy3®		A90-516C3	
IgG (H+L)	Cy5.5®		A90-516C6	
IgG (H+L)	Cy5®		A90-516C5	
IgG (H+L)	DyLight® 350		A90-516D1	
IgG (H+L)	DyLight® 488	A90-116D2	A90-516D2	A90-238D2
IgG (H+L)	DyLight® 550	A90-116D3	A90-516D3	A90-238D3
IgG (H+L)	DyLight® 594	A90-116D4	A90-516D4	A90-238D4
IgG (H+L)	DyLight® 650	A90-116D5	A90-516D5	A90-238D5
IgG (H+L)	DyLight® 680		A90-516D6	
IgG (H+L)	DyLight® 755		A90-516D7	
IgG (H+L)	DyLight® 800		A90-516D8	
IgG (H+L)	FITC	A90-116F	A90-516F	A90-238F
IgG (H+L)	R-PE	A90-116PE	A90-516PE	A90-238PE
IgG, Fab	HRP	A90-100P		

Staining of p53 in ovarian carcinoma. Secondary antibody: Donkey anti-Mouse IgG (H+L) Antibody, DyLight® 550 Conjugated, Cat# A90-337D3.



Staining of p53 in ovarian carcinoma. Secondary antibody: Donkey anti-Mouse IgG (H+L) Antibody, DyLight® 594 Conjugated, Cat# A90-137D4.

# Anti-Mouse Secondary Antibodies

## Goat anti-Mouse Continued

Target	Conjugate	Whole IgG	Highly x-Adsorbed	F(ab') <sub>2</sub> Fragment
IgG, Fc	Biotin	A90-131B	A90-231B	A90-239B
IgG, Fc	Alk. Phos.	A90-131AP	A90-231AP	A90-239AP
IgG, Fc	HRP	A90-131P	A90-231P	A90-239P
IgG, Fc	DyLight® 488	A90-131D2	A90-231D2	A90-239D2
IgG, Fc	DyLight® 550	A90-131D3	A90-231D3	A90-239D3
IgG, Fc	DyLight® 594	A90-131D4	A90-231D4	A90-239D4
IgG, Fc	DyLight® 650	A90-131D5	A90-231D5	A90-239D5
IgG, Fc	FITC	A90-131F	A90-231F	A90-239F
IgG, Fc	R-PE			A90-239PE
IgG+M+A (H+L)	Biotin	A90-144B	A90-244B	A90-145B
IgG+M+A (H+L)	Alk. Phos.			A90-145AP
IgG+M+A (H+L)	HRP	A90-144P	A90-244P	A90-145P
IgG+M+A (H+L)	DyLight® 488		A90-244D2	
IgG+M+A (H+L)	DyLight® 550		A90-244D3	
IgG+M+A (H+L)	DyLight® 594		A90-244D4	
IgG+M+A (H+L)	DyLight® 650		A90-244D5	
IgG+M+A (H+L)	FITC	A90-144F	A90-244F	A90-145F
IgG1	Biotin	A90-105B	A90-205B	
IgG1	Alk. Phos.	A90-105AP	A90-205AP	
IgG1	HRP	A90-105P	A90-205P	
IgG1	FITC	A90-105F	A90-205F	
IgG2a	Biotin	A90-107B	A90-207B	
IgG2a	Alk. Phos.	A90-107AP	A90-207AP	
IgG2a	HRP	A90-107P	A90-207P	
IgG2a	FITC	A90-107F	A90-207F	
IgG2b	Biotin	A90-109B	A90-209B	
IgG2b	Alk. Phos.	A90-109AP	A90-209AP	
IgG2b	HRP	A90-109P	A90-209P	
IgG2b	FITC	A90-109F	A90-209F	
IgG2c	Biotin	A90-136B	A90-236B	
IgG2c	Alk. Phos.	A90-136AP	A90-236AP	
IgG2c	HRP	A90-136P	A90-236P	
IgG2c	FITC	A90-136F	A90-236F	
IgG3	Biotin	A90-111B	A90-211B	
IgG3	Alk. Phos.	A90-111AP	A90-211AP	
IgG3	HRP	A90-111P	A90-211P	
IgG3	FITC	A90-111F	A90-211F	

## Rabbit anti-Mouse

Target	Conjugate	Whole IgG	Highly x-Adsorbed	F(ab') <sub>2</sub> Fragment
IgG (H+L)	Biotin	A90-117B	A90-317B	A90-243B
IgG (H+L)	Alk. Phos.	A90-117AP	A90-317AP	A90-243AP
IgG (H+L)	HRP	A90-117P	A90-217P	A90-243P
IgG (H+L)	DyLight® 350		A90-317D1	
IgG (H+L)	DyLight® 488		A90-317D2	A90-243D2

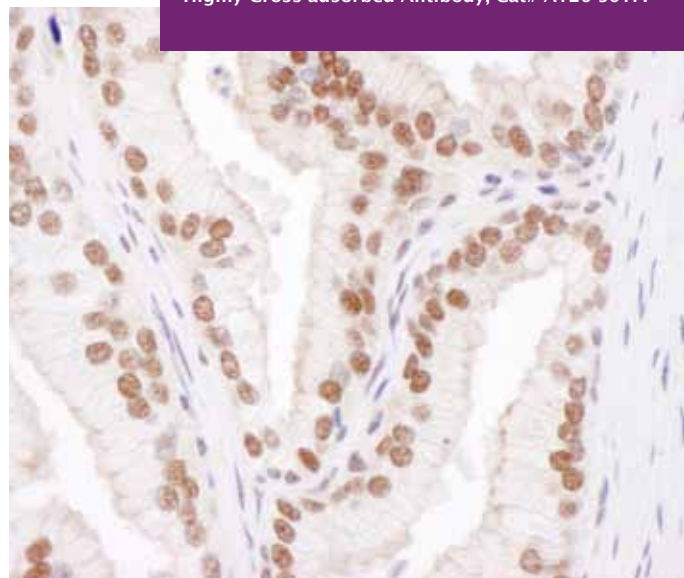
## Rabbit anti-Mouse Continued

Target	Conjugate	Whole IgG	Highly x-Adsorbed	F(ab') <sub>2</sub> Fragment
IgG (H+L)	DyLight® 550		A90-317D3	A90-243D3
IgG (H+L)	DyLight® 594		A90-317D4	A90-243D4
IgG (H+L)	DyLight® 650		A90-317D5	A90-243D5
IgG (H+L)	DyLight® 680		A90-317D6	
IgG (H+L)	DyLight® 755		A90-317D7	
IgG (H+L)	DyLight® 800		A90-317D8	
IgG (H+L)	FITC	A90-117F	A90-317F	
IgG (H+L)	R-PE			A90-243PE

## Sheep anti-Mouse

Target	Conjugate	Whole IgG	Highly x-Adsorbed	F(ab') <sub>2</sub> Fragment
IgG (H+L)	Biotin	A90-146B		
IgG (H+L)	Alk. Phos.	A90-146AP		
IgG (H+L)	HRP	A90-146P		
IgG (H+L)	FITC	A90-146F		

Staining of CUL4B in human prostate carcinoma. Primary antibody: Rabbit anti-CUL4B Antibody, Cat# A303-864A. Secondary antibody: Rabbit IgG (H+L), Highly Cross-adsorbed Antibody, Cat# A120-501P.



secondary  
Really Good Antibodies

DyLight™ is a trademark of Thermo Fisher Scientific Inc. and its subsidiaries.  
Cy® and CyDye® are registered trademarks of GE Healthcare.

Cover: Staining of p53 in ovarian carcinoma. Secondary antibody: Donkey anti-Mouse IgG (H+L) Antibody, DyLight® 550 Conjugated, Cat# A90-337D3.

# Anti-Goat Secondary Antibodies

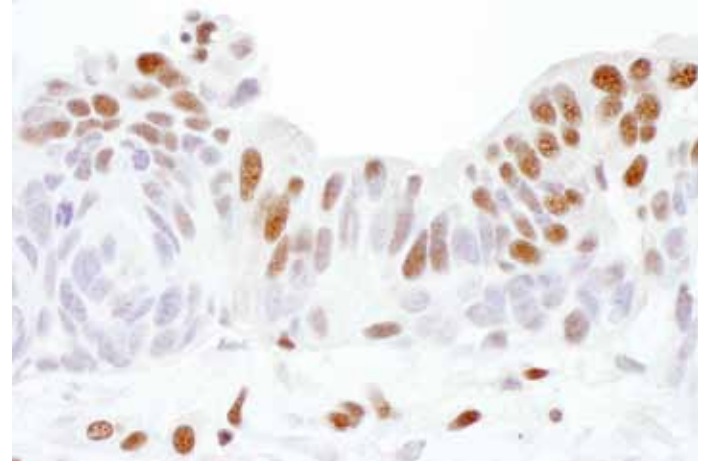
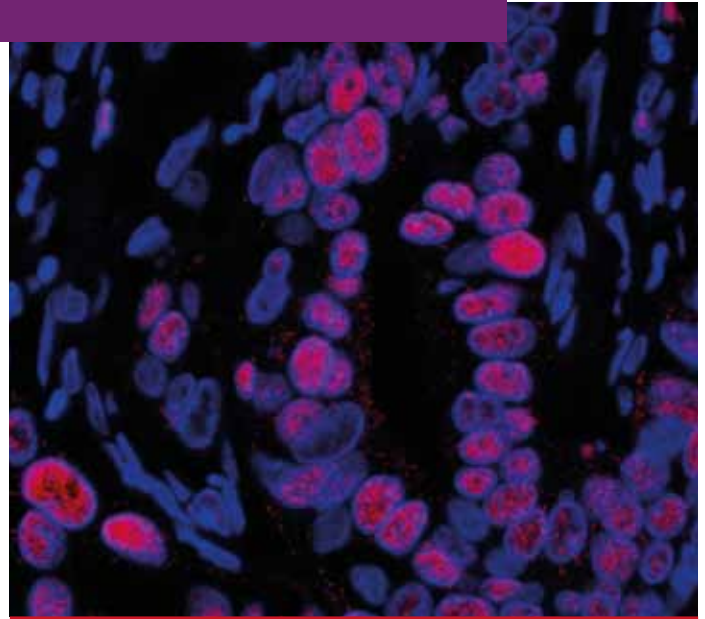
## Donkey anti-Goat

Target	Conjugate	Whole IgG	Highly x-Adsorbed	F(ab') <sub>2</sub> Fragment
IgG (H+L)	Biotin	A50-101B	A50-201B	
IgG (H+L)	Alk. Phos.	A50-101AP	A50-201AP	
IgG (H+L)	HRP	A50-101P	A50-201P	A50-207P
IgG (H+L)	Cy2®		A50-201C2	
IgG (H+L)	Cy3®		A50-201C3	
IgG (H+L)	Cy5.5®		A50-201C6	
IgG (H+L)	Cy5®		A50-201C5	
IgG (H+L)	DyLight® 350		A50-201D1	
IgG (H+L)	DyLight® 488	A50-101D2	A50-201D2	A50-207D2
IgG (H+L)	DyLight® 550	A50-101D3	A50-201D3	A50-207D3
IgG (H+L)	DyLight® 594	A50-101D4	A50-201D4	A50-207D4
IgG (H+L)	DyLight® 650	A50-101D5	A50-201D5	A50-207D5
IgG (H+L)	DyLight® 680		A50-201D6	
IgG (H+L)	DyLight® 755		A50-201D7	
IgG (H+L)	DyLight® 800		A50-201D8	
IgG (H+L)	FITC	A50-101F	A50-201F	A50-207F
IgG (H+L)	R-PE			A50-207PE

## Rabbit anti-Goat

Target	Conjugate	Whole IgG	Highly x-Adsorbed	F(ab') <sub>2</sub> Fragment
IgG (H+L)	Biotin	A50-100B	A50-200B	A50-309B
IgG (H+L)	Alk. Phos.	A50-100AP	A50-200AP	A50-309AP
IgG (H+L)	HRP	A50-100P	A50-200P	A50-309P
IgG (H+L)	DyLight® 350		A50-200D1	
IgG (H+L)	DyLight® 488	A50-100D2	A50-200D2	A50-309D2
IgG (H+L)	DyLight® 550	A50-100D3	A50-200D3	A50-309D3
IgG (H+L)	DyLight® 594	A50-100D4	A50-200D4	A50-309D4
IgG (H+L)	DyLight® 650	A50-100D5	A50-200D5	A50-309D5
IgG (H+L)	DyLight® 680		A50-200D6	
IgG (H+L)	DyLight® 755		A50-200D7	
IgG (H+L)	DyLight® 800		A50-200D8	
IgG (H+L)	FITC	A50-100F	A50-200F	A50-309F
IgG (H+L)	R-PE		A50-309PE	
IgG, Fc	Biotin		A50-204B	
IgG, Fc	Alk. Phos.	A50-104AP	A50-204AP	
IgG, Fc	HRP	A50-104P	A50-204P	
IgG, Fc	DyLight® 488		A50-204D2	
IgG, Fc	DyLight® 550		A50-204D3	
IgG, Fc	DyLight® 594		A50-204D4	
IgG, Fc	DyLight® 650		A50-204D5	
IgG, Fc	FITC	A50-104F	A50-204F	

Staining of MCM3 in ovarian carcinoma. Secondary antibody: Donkey anti-Goat IgG (H+L) Antibody, DyLight® 594 Conjugated, Cat# A50-101D4.



Staining of SP1 in ovarian carcinoma. Secondary antibody: Donkey anti-Goat IgG (H+L) Antibody, HRP Conjugated, Cat# A50-101P.

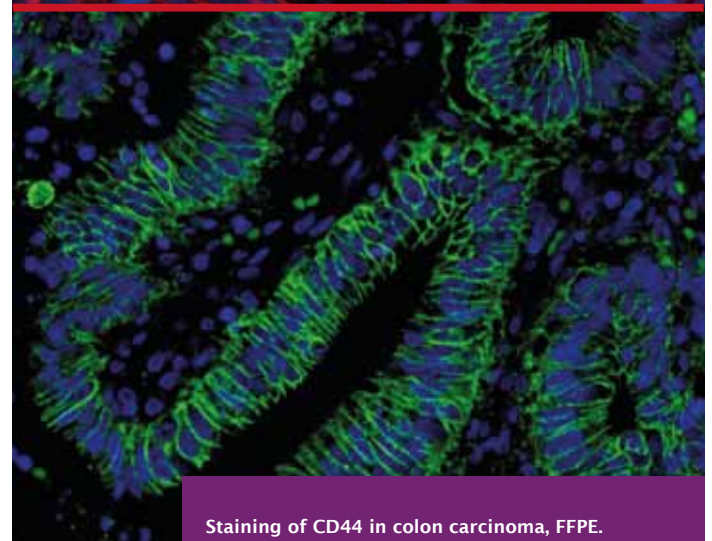
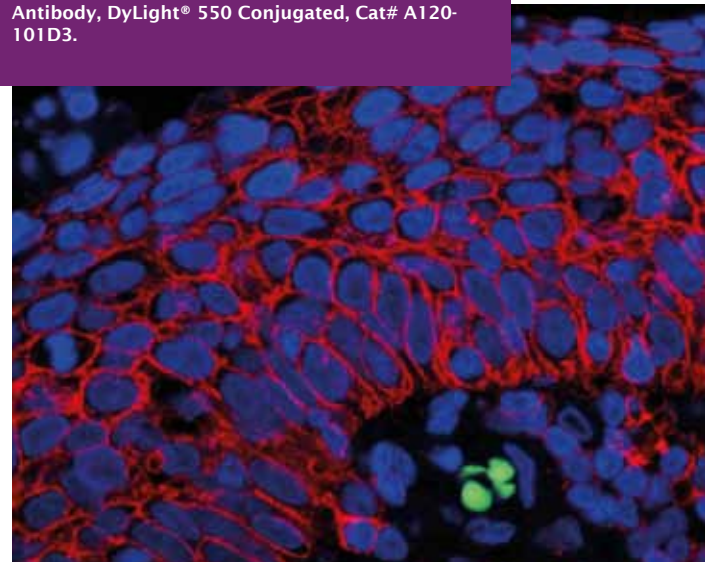
# Anti-Rabbit Secondary Antibodies

Donkey anti-Rabbit				
Target	Conjugate	Whole IgG	Highly x-Adsorbed	F(ab') <sub>2</sub> Fragment
IgG (H+L)	Biotin	A120-108B	A120-208B	
IgG (H+L)	Alk. Phos.	A120-108AP	A120-208AP	A120-216AP
IgG (H+L)	HRP	A120-108P	A120-208P	A120-216P
IgG (H+L)	DyLight® 350		A120-208D1	
IgG (H+L)	DyLight® 488	A120-108D2	A120-208D2	A120-216D2
IgG (H+L)	DyLight® 550	A120-108D3	A120-208D3	A120-216D3
IgG (H+L)	DyLight® 594	A120-108D4	A120-208D4	A120-216D4
IgG (H+L)	DyLight® 650	A120-108D5	A120-208D5	A120-216D5
IgG (H+L)	DyLight® 680		A120-208D6	
IgG (H+L)	DyLight® 755		A120-208D7	
IgG (H+L)	DyLight® 800		A120-208D8	
IgG (H+L)	FITC	A120-108F	A120-208F	A120-216F
IgG (H+L)	R-PE			A120-216PE

Goat anti-Rabbit				
Target	Conjugate	Whole IgG	Highly x-Adsorbed	F(ab') <sub>2</sub> Fragment
IgG (H+L)	Agarose	A120-101S		
IgG (H+L)	Biotin	A120-101B	A120-201B	A120-314B
IgG (H+L)	Alk. Phos.	A120-101AP	A120-201AP	A120-314AP
IgG (H+L)	HRP	A120-101P	A120-201P	A120-314P
IgG (H+L)	Cy2®		A120-201C2	
IgG (H+L)	Cy3®		A120-201C3	
IgG (H+L)	Cy5.5®		A120-201C6	
IgG (H+L)	Cy5®		A120-201C5	
IgG (H+L)	DyLight® 350		A120-201D1	
IgG (H+L)	DyLight® 488	A120-101D2	A120-201D2	A120-314D2
IgG (H+L)	DyLight® 550	A120-101D3	A120-201D3	A120-314D3
IgG (H+L)	DyLight® 594	A120-101D4	A120-201D4	A120-314D4
IgG (H+L)	DyLight® 650	A120-101D5	A120-201D5	A120-314D5
IgG (H+L)	DyLight® 680		A120-201D6	
IgG (H+L)	DyLight® 755		A120-201D7	
IgG (H+L)	DyLight® 800		A120-201D8	
IgG (H+L)	FITC	A120-101F	A120-201F	A120-314F
IgG, Fc	Biotin	A120-111B		A120-215B
IgG, Fc	Alk. Phos.	A120-111AP	A120-211AP	A120-215AP
IgG, Fc	HRP	A120-111P	A120-211P	A120-215P
IgG, Fc	DyLight® 488	A120-111D2	A120-211D2	A120-215D2
IgG, Fc	DyLight® 550	A120-111D3	A120-211D3	A120-215D3
IgG, Fc	DyLight® 594	A120-111D4	A120-211D4	A120-215D4
IgG, Fc	DyLight® 650	A120-111D5	A120-211D5	A120-215D5
IgG, Fc	FITC	A120-111F	A120-211F	A120-215F

Sheep anti-Rabbit				
Target	Conjugate	Whole IgG	Highly x-Adsorbed	F(ab') <sub>2</sub> Fragment
IgG (H+L)	Biotin	A120-100B		
IgG (H+L)	Alk. Phos.	A120-100AP		
IgG (H+L)	HRP	A120-100P		
IgG (H+L)	DyLight® 488	A120-100D2		
IgG (H+L)	DyLight® 550	A120-100D3		
IgG (H+L)	DyLight® 594	A120-100D4		
IgG (H+L)	DyLight® 650	A120-100D5		
IgG (H+L)	FITC	A120-100F		

Staining of CD44 in lung carcinoma, FFPE.  
Secondary antibody: Goat anti-Rabbit IgG (H+L) Antibody, DyLight® 550 Conjugated, Cat# A120-101D3.



Staining of CD44 in colon carcinoma, FFPE.  
Secondary antibody: Goat anti-Rabbit IgG (H+L) Antibody, DyLight® 488 Conjugated, Cat# A120-101D2.

Secondary  
Really Good Antibodies

## Anti-Rat Secondary Antibodies

### Donkey anti-Rat

Target	Conjugate	Whole IgG	Highly x-Adsorbed	F(ab') <sub>2</sub> Fragment
IgG (H+L)	Biotin	A110-137B	A110-337B	A110-242B
IgG (H+L)	Alk. Phos.	A110-137AP	A110-337AP	A110-242AP
IgG (H+L)	HRP	A110-137P	A110-337P	A110-242P
IgG (H+L)	DyLight® 350		A110-337D1	
IgG (H+L)	DyLight® 488		A110-337D2	A110-242D2
IgG (H+L)	DyLight® 550		A110-337D3	A110-242D3
IgG (H+L)	DyLight® 594		A110-337D4	A110-242D4
IgG (H+L)	DyLight® 650		A110-337D5	A110-242D5
IgG (H+L)	DyLight® 680		A110-337D6	
IgG (H+L)	DyLight® 755		A110-337D7	
IgG (H+L)	DyLight® 800		A110-337D8	
IgG (H+L)	FITC	A110-137F	A110-337F	A110-242F
IgG (H+L)	R-PE			A110-242PE

### Goat anti-Rat

Target	Conjugate	Whole IgG	Highly x-Adsorbed	F(ab') <sub>2</sub> Fragment
IgG (H+L)	Agarose	A110-105S		
IgG (H+L)	Biotin	A110-105B	A110-305B	A110-238B
IgG (H+L)	Alk. Phos.	A110-105AP	A110-305AP	A110-238AP
IgG (H+L)	HRP	A110-105P	A110-305P	A110-238P
IgG (H+L)	Cy2®		A110-305C2	
IgG (H+L)	Cy3®		A110-305C3	
IgG (H+L)	Cy5.5®		A110-305C6	
IgG (H+L)	Cy5®		A110-305C5	
IgG (H+L)	DyLight® 350		A110-305D1	
IgG (H+L)	DyLight® 488	A110-105D2	A110-305D2	A110-238D2
IgG (H+L)	DyLight® 550	A110-105D3	A110-305D3	A110-238D3
IgG (H+L)	DyLight® 594	A110-105D4	A110-305D4	A110-238D4
IgG (H+L)	DyLight® 650	A110-105D5	A110-305D5	A110-238D5
IgG (H+L)	DyLight® 680		A110-305D6	
IgG (H+L)	DyLight® 755		A110-305D7	
IgG (H+L)	DyLight® 800		A110-305D8	
IgG (H+L)	FITC	A110-105F	A110-305F	A110-238F
IgG (H+L)	R-PE	A110-105PE	A110-305PE	
IgG, Fc	Biotin	A110-136B	A110-236B	A110-239B
IgG, Fc	Alk. Phos.	A110-136AP	A110-236AP	A110-239AP
IgG, Fc	HRP	A110-136P	A110-236P	A110-239P
IgG, Fc	DyLight® 488		A110-236D2	A110-239D2
IgG, Fc	DyLight® 550		A110-236D3	A110-239D3
IgG, Fc	DyLight® 594		A110-236D4	A110-239D4
IgG, Fc	DyLight® 650		A110-236D5	A110-239D5
IgG, Fc	FITC	A110-136F	A110-236F	A110-239F
IgG, Fc	R-PE		A110-239PE	

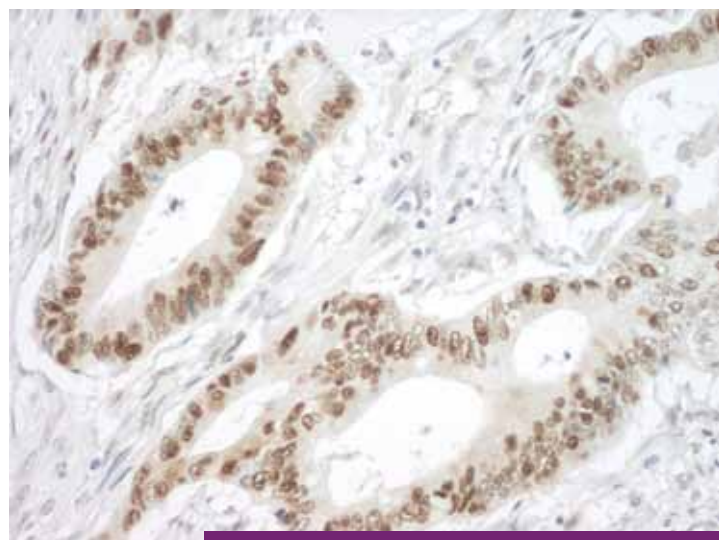
### Goat anti-Rat Continued

Target	Conjugate	Whole IgG	Highly x-Adsorbed	F(ab') <sub>2</sub> Fragment
IgG+M+A (H+L)	HRP	A110-143P		
IgG+M+A (H+L)	FITC	A110-143F		
IgG1	Alk. Phos.	A110-106AP	A90-337B	A90-142B
IgG1	HRP	A110-106P	A90-337AP	A90-242AP
IgG1	FITC	A110-106F	A90-337P	A90-242P
IgG2a	Alk. Phos.	A110-109AP	A90-337D1	
IgG2a	HRP	A110-109P	A90-337D2	A90-242D2
IgG2a	FITC	A110-109F	A90-337D3	A90-242D3
IgG2b	Alk. Phos.	A110-111AP	A90-337D4	A90-242D4
IgG2b	HRP	A110-111P	A90-337D5	A90-242D5
IgG2b	FITC	A110-111F	A90-337D6	
IgG2c	Alk. Phos.	A110-114AP	A90-337D7	
IgG2c	HRP	A110-114P	A90-337D8	
IgG2c	FITC	A110-114F	A90-337F	A90-242F

### Rabbit anti-Rat

Target	Conjugate	Whole IgG	Highly x-Adsorbed	F(ab') <sub>2</sub> Fragment
IgG (H+L)	Biotin	A110-122B	A110-322B	A110-144B
IgG (H+L)	Alk. Phos.	A110-122AP	A110-322AP	A110-144AP
IgG (H+L)	HRP	A110-122P	A110-322P	A110-144P
IgG (H+L)	FITC	A110-122F	A110-322F	A110-144F

\*Rabbit anti-rat F(ab')<sub>2</sub> antibodies are not x-adsorbed.



Staining of PCNA in human stomach carcinoma. Primary antibody: Rabbit anti-PCNA IHC Antibody, Cat# IHC-00012. Secondary antibody: Rabbit IgG (H+L), Highly Cross-adsorbed Antibody, Cat# A120-501P.