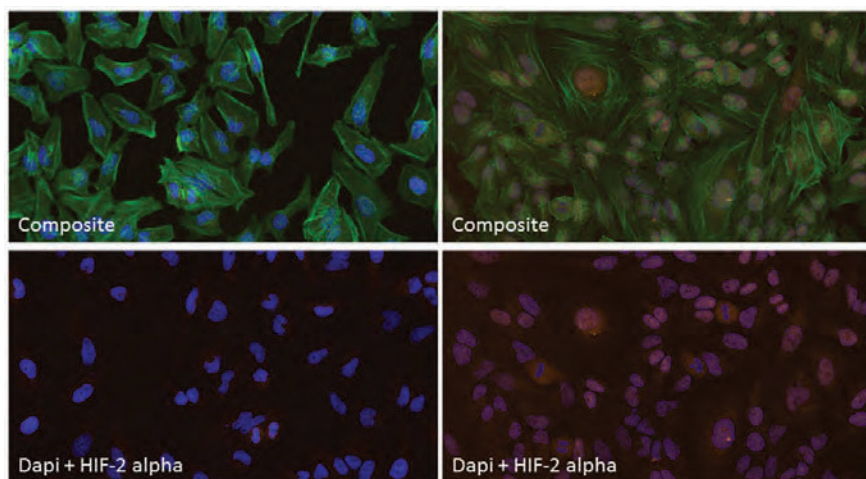


Hypoxia Signaling Research Antibodies

Over 45 Antibodies Targeting More Than 40 Proteins Involved in Hypoxia Signaling

Upper: Detection of human HIF2-alpha in FFPE renal cell carcinoma by IHC. Antibody: Rabbit anti-HIF2-alpha recombinant monoclonal [BL-95-1A2] (A700-003). Secondary: HRP-conjugated goat anti-rabbit IgG (A120-501P). Substrate: DAB.

Lower: Detection of human HIF2-alpha (orange) in formaldehyde-fixed HeLa cells by ICC-IF (left: non-confluent, right: confluent). Antibody: Rabbit anti-HIF2-alpha recombinant monoclonal [BL-95-1A2] (A700-003). Secondary: DyLight® 550-conjugated goat anti-rabbit IgG (A120-201D3). Counterstain: Phalloidin Alexa Fluor® 488-conjugated (green) and DAPI (blue).



Really Good Antibodies

bethyl.com

CIENTISOL, S.L.U.

www.cientisol.com · info@cientisol.com · 981 936 338



BETHYL
LABORATORIES, INC

Página 1

Hypoxia Signaling Research Antibodies

Bethyl Laboratories, Inc. is dedicated to improving lives by supporting scientific discovery through its qualified antibody products and custom antibody services. Since its founding in 1972, Bethyl has manufactured all of its antibodies on-site to exacting standards with validation to a wide range of applications.

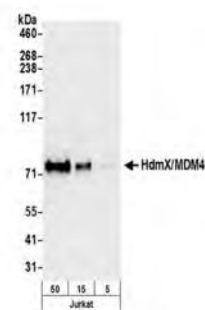
Below is a sampling of select antibodies targeting proteins involved in studying hypoxia. To view Bethyl's complete portfolio, please visit: www.bethyl.com/antibody/Cell+Biolog+Hypoxia.

Target	Reactivities	Applications	# of Abs	AbVantage™ Pack
4EBP1	Hu, Ms	WB, IHC	2	
AKT1	Hu	WB, IHC, PLA	2	
AMPK alpha 1	Bv, Hu, Rt	WB, IP, IHC	3	
ARNT	Hu	IP, IHC	2	Yes
BAD	Hu, Ms	IP, IHC, IHC-IF	2	
BNIP3L	Hu	IP	2	Yes
BRIP1	Hu	WB, IP	2	Yes
CCNA2/Cyclin A2	Hu	WB, IP	2	Yes
c-Myb	Hu, Ms	WB, IP, IHC	5	Yes
c-myc	-	WB, IP, ICC, IF, PLA, ELISA	14	No
COX-2	Hu	WB, IP, IHC	1	
DNMT3A	Hu, Ms	WB, IHC	1	
E2F1	Hu	WB, IP, IHC, PLA	3	Yes
FOXO3A	Hu, Ms	WB, IP, IHC, PLA	3	Yes
GLUT4	Hu	IP	1	
HdmX/MDM4* **	Hu	WB, IP, PLA	5	Yes
HIF1-alpha**	Hu, Ms	WB, IP, IHC, ICC, ICC-IF, PLA, ChIP-Seq	5	
HIF2-alpha**	Hu	WB, IP, IHC, ICC, ICC-IF, ChIP-Seq	1	
HO-1	Hu	WB, IP	2	Yes
ICAM-1	Hu	WB, IP	2	Yes
IRAK1	Hu	WB, IP	2	Yes
Lamin-A/C	Hu, Ms	WB, IP, IHC, ICC, ICC-IF	4	Yes
mTOR	Hu, Ms	WB, IP, ICC, PLA	7	Yes
P4HB/PDI	Hu, Ms	WB	1	
p53	Hu	WB, IP, IHC, PLA, ChIP-Seq, F	5	Yes
PGC-1	Hu	IHC	1	
PHD1	Hu	WB, IP	1	
PHD2	Hu	WB	1	
PHD3	Hu, Ms	WB	1	
PTEN	Hu, Ms	WB, IP, IHC, IF, PLA	4	Yes
REA	Hu, Ms	WB, IP, IHC	4	Yes
Sirt1	Hu	WB, IP, PLA	2	Yes
Sirt2	Hu	IP	1	
Stanniocalcin 2	Hu	WB, IP	1	
SUV39H1	Hu	WB, IP	1	
TBL2	Hu	WB, IP	2	Yes
TIGAR	Hu	WB, IP, IHC	3	Yes
TRPC6	Hu	WB, IP	2	Yes

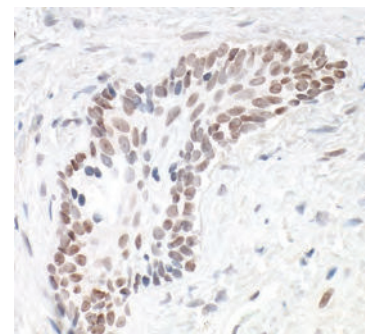
All antibodies are antigen affinity purified.

*Phospho-specific available

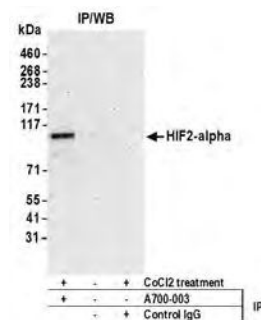
**Recombinant rabbit monoclonal antibody available



Detection of human HdmX/MDM4 by WB of Jurkat lysate. Antibody: Rabbit anti-HdmX/MDM4 recombinant monoclonal [BL-3-2F2] (A700-000). Secondary: HRP-conjugated goat anti-rabbit IgG (A120-101P).



Detection of human HIF1-alpha in FFPE prostate carcinoma by IHC. Antibody: Rabbit anti-HIF1-alpha recombinant monoclonal [BL-124-3F7] (A700-001). Secondary: HRP-conjugated goat anti-rabbit IgG (A120-501P). Substrate: DAB.



Detection of human HIF2-alpha by WB of immunoprecipitates from HepG2 lysate treated with 200 μ M CoCl₂ (+) or mock treated. Antibodies: Rabbit anti-HIF2-alpha recombinant monoclonal [BL-95-1A2] (A700-003). Secondary: ReliaBLOT® reagents (WB120).

BETHYL
LABORATORIES, INC

We Make Every Antibody We Sell.