

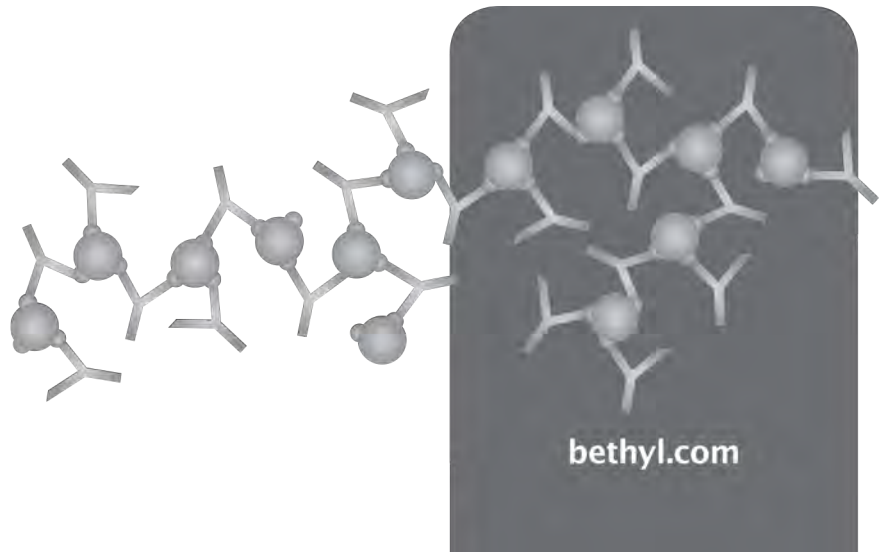
Detection of human CD45 in small intestine by IHC. Antibody: Rabbit anti-CD45 recombinant monoclonal [BL-178-12C7] (A700-012). Secondary: HRP-conjugated goat anti-rabbit IgG (A120-501P). Substrate: DAB.

T-Cell Receptor Signaling Antibodies

Over 360 Antibodies to More Than 190 T-Cell Receptor Signaling Proteins



Cancer Research
Really Good Antibodies



T-Cell Receptor Signaling Antibodies

Bethyl Laboratories, Inc. is dedicated to improving lives by supporting scientific discovery through its qualified antibody products and custom antibody services. Since its founding in 1972, Bethyl has manufactured all of its antibodies on-site to exacting standards with validation to a range of applications.

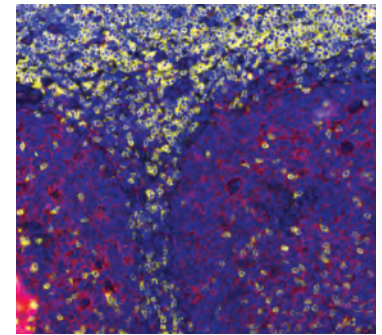
Below is a sampling of select antibodies targeting T Cell Receptor Signaling proteins. For the complete listing, please visit: <https://www.bethyl.com/antibody/Signal+Transduction+T+Cell+Receptor+Signaling>.

Target	Reactivities	Applications	# of Abs	AbVantage™ Pack
AKT1	Hu	WB, IHC, PLA	2	
BRAF	Hu	WB, IP, IHC	2	
CARMA1	Hu	WB, IP	4	Yes
CD3D	Hu	WB, IP	1	
CD3E**	Hu	WB, IP, IHC, ICC, IHC-IF	2	
CD247/CD3Z**	Hu	WB, IP, IHC	4	Yes
CD4**	Hu	WB, IP, IHC	1	
CD5	Hu	WB, IP	2	Yes
CD20	Hu	WB, IHC, ICC, IHC-F	1	
CD28	Hu	WB, IP	1	
CD45**	Hu, Ms	WB, IP, IHC, ICC, ICC, ICC-IF	2	
CD45RO	Hu	WB, IHC, ICC	1	
ERK1*	Hu	WB, IP, IHC, PLA	4	Yes
ERK2	Hu	WB, IP, IHC, PLA	4	Yes
GATA3	Hu	WB, IHC	1	
Granzyme B*	Hu	IHC, WB	1	
HLA-DR	Hu	IHC, ICC, WB	1	
IKK-alpha	Hu, Ms	WB, IP, IHC, PLA	3	Yes
IKK-beta	Hu	WB, IP, PLA	1	
ITK	Hu	WB	1	
LCP2/SLP76	Hu	WB, IP	2	Yes
mTOR	Hu, Ms	WB, IP, ICC, PLA	7	Yes
NF-kappaB1	Hu	WB, IP, IHC, PLA	3	Yes
PAK1	Hu, Ms	WB, IP	2	Yes
PAK2	Hu, Ms	WB, IP	2	Yes
PDE4D	Hu	WB, IP	2	Yes
PD-L1**	Hu	WB, IP, IHC, ICC, IHC-F, ICC-F	1	
PIK3R2	Hu	WB, IP	2	Yes
PKD2	Hu	WB, IP, IHC	3	Yes
PLC-gamma 1	Hu, Ms	WB, IP	1	
PRKCQ	Hu	WB, IP	2	Yes
PSMA1	Hu	WB, IP, IHC	2	Yes
PSMB8/LMP7	Hu	WB, IP	2	Yes
RelA*	Hu, Ms	WB, IP, IHC, PLA, ChIP-Seq	9	Yes
Rictor	Hu, Ms	WB, IP, IHC, ICC, PLA	7	Yes
TAK1	Hu	WB, IP	2	Yes
TBP1	Hu, Ms	WB, IP, IHC	2	Yes
TRIP1/SUG1	Hu, Ms	WB, IP, IHC	3	Yes
Sin1	Hu, Ms	WB, IP, IHC, PLA	3	
Ubiquitin	Bv, Hu, Ms	WB, IHC	3	
WASP*	Hu	WB, IP	2	

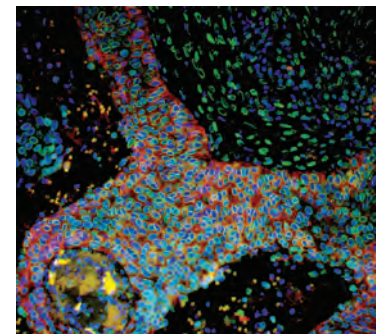
All antibodies are antigen affinity purified.

*Phospho-specific available

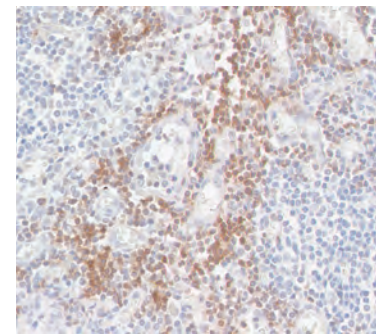
**Recombinant rabbit monoclonal antibody available



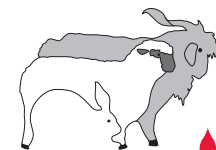
Detection of human CD3E (yellow) and CD20 (red) in FFPE lymph node by IHC-IF. Antibody: Rabbit anti-CD3E recombinant monoclonal [BL-298-5D12] (A700-016) and mouse anti-CD20 monoclonal [L26] (A500-017A). Secondary: DyLight® 650-conjugated goat anti-rabbit IgG (A120-201D5) and DyLight® 594-conjugated goat anti-mouse IgG (A90-116D4). Counterstain: DAPI (blue).



Detection of human PD-L1 (red) and Lamin-A/C (green) in FFPE lung carcinoma by IHC-IF. Antibody: Rabbit anti-PD-L1 recombinant monoclonal [BLR020E] (A700-020) and rabbit anti-Lamin-A/C (A303-430A). Secondary: DyLight® 594-conjugated goat anti-rabbit IgG (A120-201D4) and DyLight® 488-conjugated goat anti-rabbit IgG (A120-201D2). Counterstain: DAPI (blue).



Detection of human CD247/CD3Z in FFPE metastatic lymph node from lung carcinoma by IHC. Antibody: Rabbit anti-CD247/CD3Z recombinant monoclonal [BL-336-1B2] (A700-017). Secondary: HRP-conjugated goat anti-rabbit IgG (A120-501P). Substrate: DAB.



BETHYL
LABORATORIES, INC.



We Make Every Antibody We Sell.