

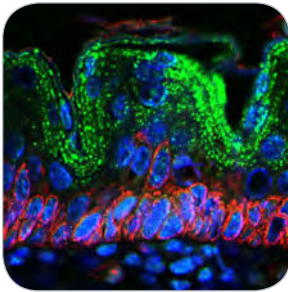
IMMUNOLOGY

Bioss
ANTIBODIES

TARGET	APPLICATION	SPECIES	CATALOG
AIF1	WB, IHC-P, IF(IHC-P)	Hu, Ms, Rt	bs-1363R
AIM2	IHC-P, FCM	Hu, Ms, Rt	bs-5986R
AP65L	WB, IHC-P	Hu, Ms, Rt	bs-4005R
APG7	WB, IHC-P	Hu, Ms, Rt	bs-2432R
APG12	WB, IHC-P	Hu, Ms, Rt	bs-4012R
ASK1 (Thr845)	WB, IHC-P	Hu, Ms	bs-3031R
ATG1	WB, IHC-P	Hu, Ms, Rt	bs-3602R
ATG1 (Ser556)	WB, IHC-P	Hu, Ms, Rt	bs-3464R
ATG9B	IHC-P	Hu, Ms, Rt	bs-4011R
ATG13	WB, IHC-P	Hu, Ms, Rt	bs-3864R
ATG16A (Ser287)	WB, IHC-P	Hu, Ms, Rt	bs-5198R
ATG16L	WB, IHC-P	Hu, Ms, Rt	bs-4007R
BAD	WB, IHC-P	Hu, Ms, Rt	bsm-52020R
Bcl2l1	WB, IHC-P, IHC-F, ICC	Hu, Ms, Rt	bs-1353R
c-Raf	WB, IHC-P	Hu, Ms, Rt	bs-1703R
CCL5	IHC-P, FCM	Hu, Ms, Bv	bs-1324R
CCR7	IHC-P, IF(IHC-P)	Hu, Ms, Rt	bs-1305R
CD4	WB, IHC-P, IHC-F, IF(IHC-P)	Hu, Ms, Rt, Pg	bs-0647R
CD8	WB, IHC-P, FCM	Ms, Rt	bs-0648R
CD8	WB, IHC-P, IF(IHC-P)	Hu	bs-4790R
CD8B	IHC-P, IF(IHC-P)	Hu, Ms, Rt	bs-4914R
CD14	WB, IHC-P, FCM	Hu, Ms, Rt	bs-1192R
CD19	WB, IHC-P, IF(IHC-P)	Hu, Ms, Rt	bs-4755R
CD31	WB, IHC-P, ICC, FCM	Hu, Ms, Rt	bs-0195R
CD45	IHC-P, FCM	Ms, Rt	bs-4819R
CD62L	WB, IHC-P, FCM	Ms, Rt	bs-1036R
CD134	IHC-P	Hu, Ms, Rt	bs-2685R
CD142	WB, IHC-P, ICC, FCM	Hu, Ms, Rt	bs-4690R
CD150	IHC-P, IF(IHC-P)	Hu, Ms, Rt	bs-2709R
CD160	WB, IHC-P	Hu, Ms, Rt	bs-2526R
CD161c/NK1.1	WB, IHC-P	Ms, Rt	bs-4682R
CD200	IHC-P	Hu, Ms, Rt	bs-6030R
CD212	IHC-P, IHC-F	Ms, Rt	bs-2603R
CD272	IHC-P, IF(IHC-P)	Hu, Ms, Rt	bs-0624R

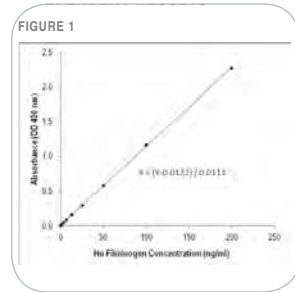
TARGET	APPLICATION	SPECIES	CATALOG
CD279	WB, IHC-P	Hu, Ms, Rt	bs-1867R
Complement C1q	WB	Hu	bsm-50312M
Complement C2	IHC-P	Hu, Ms, Rt	bs-8613R
Complement C3	IF(IHC-P), IF (IHC-F)	Hu, Ms, Rt, Bv	bs-2934R
Complement C4 (γ-chain)	WB, IP	Hu	bsm-50245M
Complement C4 (β-chain)	WB, IHC-P, IF(IHC-P), IP	Hu	bsm-50255M
Complement C6	WB, IP	Hu	bsm-50285M
Complement factor C8 beta	WB, IP	Hu	bsm-50238M
Complement factor B	WB	Hu	bsm-50226M
Complement fragment 3c	IHC-P	Hu, Ms, Rt, Pg	bs-6416R
CTLA4	WB, IHC-F	Hu, Ms, Rt	bs-10006R
CXCR1	WB, IHC-P	Hu, Ms, Rt	bs-1009R
CXCR2	IHC-P, ICC	Hu, Ms, Rt	bs-1629R
CXCR3	IHC-P, ICC, FCM	Hu, Ms, Rt	bs-2209R
CXCR4	WB, IHC-P, FCM	Hu, Ms, Rt	bs-1011R
CXCR5	IHC-P	Hu, Ms, Rt	bs-3598R
CXCR6	IHC-P	Hu, Ms, Rt	bs-1628R
CXCR7	IHC-P	Hu, Ms, Rt	bs-4897R
ERK1 + 2	WB, IHC-P	Hu, Ms, Rt, Rb	bs-2637R
ERK1/2 (Thr202+Tyr204)	WB, IHC-P, IF(IHC-P)	Hu, Ms, Rt, Bv	bs-3016R
Fibrinogen	E	Hu	bs-1240R
GM-CSF	WB, IHC-P	Hu	bs-3790R
GM-CSF	IHC-P, IF(IHC-P)	Ms, Rt	bs-0999R
GM-CSFR alpha	ICC, IF(IHC-P)	Ms, Rt	bs-1457R
GSK3 alpha (Ser21)	WB, IHC-P	Hu, Ms, Rt	bs-4692R
IFN gamma	WB, IHC-P, IHC-F	Ms, Rt	bs-0480R
IFN gamma	IHC-P	Hu	bs-0481R
IKK alpha	WB, IF(IHC-P)	Hu, Ms, Rt	bs-2907R
IL-1 beta	WB, IHC-P, IF(IHC-P)	Hu, Ms, Rt, Dg	bs-0812R
IL-1R1	WB, IHC-P	Hu, Ms, Rt	bs-2594R
IL-1R1 (Tyr496)	WB, IHC-P	Hu, Ms, Rt	bs-5394R
IL-1R2	WB, IHC-P, IF(IHC-P)	Hu, Ms, Rt	bs-2595R
IL-2	WB, IHC-P	Hu	bs-0605R
IL-2	IHC-P	Ms, Rt	bs-1191R

CCL11/EOTAXIN | bs-1601R



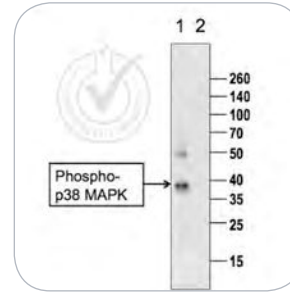
IF(IHC-P) | Mouse skin

Human fibrinogen | bs-1240R



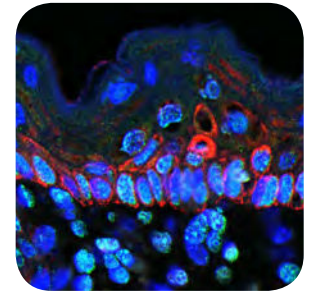
ELISA | Human fibrinogen

p38 MAPK (THR180 + TYR182) | bs-2210R





















WB | Human HeLa cells

MIP 1 Gamma | bs-2477R



IF(IHC-P) | Mouse skin

TARGET	APPLICATION	SPECIES	CATALOG
IL-2R gamma	WB, IHC-P	Hu, Ms, Rt	bs-2545R
IL-2RA	IHC-P	Hu, Ms, Rt	bs-0577R
IL-3	WB, IHC-P	Ms, Rt	bs-2598R
IL-6	 IHC-P, FIA, Immunoassay	Hu	bs-0781R
IL-6	 WB, IHC-P	Ms, Rt	bs-0782R
IL-8	 WB, IHC-P	Hu, Rb	bs-0780R
IL-9	 IHC-P	Ms, Rt	bs-2428R
IL-10	 WB, IHC-P, E	Hu, Ms, Rt, Ch	bs-0698R
IL-10	 IHC-P	Hu, Ms, Rt	bs-6761R
IL-10RB	 WB	Hu, Ms, Rt	bs-2602R
IL-12	 WB, IHC-P, IF(IHC-P)	Hu	bs-1789R
IL-12 alpha	 IHC-P, ICC	Ms, Rt	bs-0767R
IL-12 beta	 WB, IHC-P	Hu, Ms, Rt	bs-10641R
IL-12RB2	 IHC-P	Hu, Ms, Rt	bs-2604R
IL-15RA	 IP	Ms	bs-2605R
IL-17	 IHC-P, IHC-F	Ms, Rt	bs-1183R
IL-17	 IHC-P, E	Hu	bs-2140R
IL-17B	 IHC-P	Hu, Ms, Rt	bs-2609R
IL-17C	 WB, IHC-P	Hu, Ms, Rt	bs-2611R
IL-17RA	 IHC-P	Hu, Ms, Rt	bs-2606R
IL-17RB	 WB, IHC-P, FCM	Hu, Ms, Rt	bs-2610R
IL-18R Beta	 IHC-P, IP	Hu, Ms, Rt	bs-2616R
IL-21	 IHC-P	Hu, Ms, Rt	bs-2621R
Insulin	WB	Hu	bsm-50568R
IRAK1	WB, IHC-P	Hu, Ms, Rt	bs-6464R
JNK1 +2 +3	 IHC-P	Hu, Ms, Rt	bs-2592R
JNK1 +2 +3 (Thr183+Tyr185)	 WB, FCM	Hu, Ms, Rt, Bv, C	bs-1640R
LAMP1	 WB, IHC-P, FCM	Hu, Ms, Rt	bs-1970R
LAMP2	 WB, IHC-P	Hu, Ms, Rt	bs-2379R
LC3A/B	 WB, IHC-P, IF(IHC-P)	Hu, Ms, Rt	bs-11731R
Lymphocyte Activation Gene 3	 FCM	Hu, Ms, Rt	bs-2646R
Lyn	WB, IP	Hu, Ms, Rt	bsm-50313M
MIP 1 gamma	 IF(IHC-P)	Ms, Rt	bs-2477R
MAPKAP Kinase 2	 WB, IHC-P	Hu, Ms, Rt, Bv	bs-2908R
MAPKAPK2 (Thr222)	 WB, IHC-P	Hu, Ms, Rt, Bv	bs-3261R

TARGET	APPLICATION	SPECIES	CATALOG
MEK1	WB	Hu, Ms, Rt	bsm-50303M
MEK1/2 (Ser218+Ser222)	IHC-P	Hu, Ms, Rt	bs-3270R
MEK5	 WB, IHC-P	Hu, Ms, Rt	bs-4124R
MLK3 (Thr277+Ser281)	IHC-P	Hu, Ms, Rt	bs-3280R
MyD88	 WB, IHC-P	Hu, Ms, Rt	bs-1047R
NEDD4	IHC-P	Hu, Ms, Rt	bs-7877R
NFkB Inducing Kinase/NIK	WB, IHC-P	Hu, Ms, Rt	bs-0074R
NFkB p65	 WB, IHC-P, FCM	Hu, Ms, Rt, Pg	bs-0465R
NFkB p105 / p50	 WB, IHC-P	Hu, Ms, Rt	bs-1194R
NFKBIA	 WB, IHC-P	Hu, Ms, Rt	bs-1287R
P38 MAPK	 WB, IHC-P, ICC	Hu, Ms, Rt	bs-0637R
p38 MAPK (Thr180+Tyr182)	 WB, IHC-P	Hu, Ms, Rt, Gt	bs-2210R
PLCG 2	 WB, FCM	Hu, Ms, Rt	bs-3532R
SMAD1	WB, ICC	Hu, Ms	bsm-52222R
SMAD2	WB, IHC-P, ICC	Hu, Rt	bsm-52223R
SMAD3	WB, IHC-P, ICC	Hu, Ms, Rt	bsm-52224R
SMAD4	WB, IHC-P, ICC	Hu, Ms	bsm-52225R
SMAD5	WB, ICC	Hu, Ms, Rt	bsm-52226R
STAT1	WB	Hu, Ms	bsm-52232R
STAT3	WB, IHC-P, ICC	Hu, Ms	bsm-52235R
STAT5	 WB, IHC-P, FCM	Hu, Ms, Rt, Pg	bs-1142R
TLR1	IHC-P, FCM	Hu, Ms, Rt	bs-1919R
TLR2	 WB, IHC-P, ICC, FCM	Hu, Ms, Rt, Bv	bs-1019R
TLR2	 WB, IHC-P, E	Hu, Ms, Rt	bs-10472R
TLR3	 WB, IHC-P	Ms, Rt	bs-1444R
TLR4	 WB, IHC-P, ICC, FCM	Hu, Ms, Rt, Bv	bs-1021R
TLR5	 WB, IHC-P	Hu, Ms, Rt	bs-1197R
TLR6	 WB, IHC-P, FCM	Hu, Ms, Rt	bs-2716R
TLR7	 WB, IF(IHC-P)	Hu, Ms, Rt	bs-6601R
TNF alpha	 WB, IHC-P, IF(IHC-F)	Hu, Ms, Rt	bs-2081R
TNF alpha	 IHC-P, IF(IHC-P)	Hu, Ms	bsm-0387M
TNFRSF18	IHC-P	Hu, Ms, Rt	bs-1173R
TNFSF18	IHC-P	Hu, Ms, Rt	bs-2456R
TNFSF9	IHC-P	Hu	bs-3851R