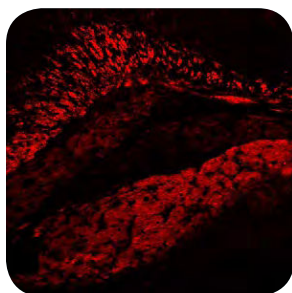


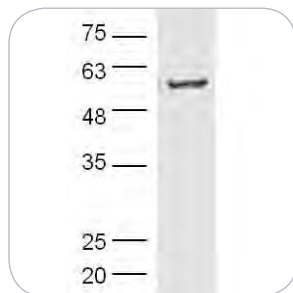
TUMOR IMMUNOLOGY

IL-1 beta | bs-0812R



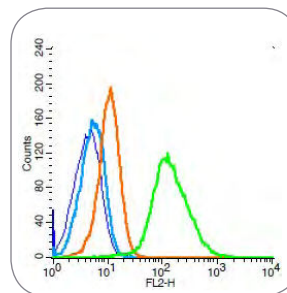
IF(IHC-P) | Mouse brain

MMP13 | bs-0575R



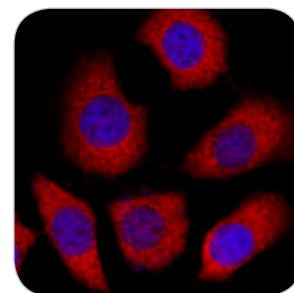
WB | Human PC3 cells

IL-6R | bs-1459R



FCM | Human Raji cells

NF-kB | bs-10037R



IF(ICC) | Human MCF-7 cells

| TARGET | APPLICATION | SPECIES | CATALOG |
|----------------------------|------------------------------|--------------------|-----------|
| AKT 1/2/3 (Tyr315/316/312) | WB, IHC-P | Hu, Ms, Rt | bs-5193R |
| AKT 1/3 | WB, IHC-P | Hu, Ms, Rt | bs-0115R |
| Arginase 1 | IHC-P, FCM | Hu, Ms, Rt | bs-8585R |
| Arginase 2 | IHC-P | Hu, Ms, Rt | bs-11397R |
| c-Ros | IHC-P | Hu, Ms, Rt | bs-2504R |
| CCL22 | IHC-P | Ms, Rt | bs-1761R |
| CD4 | WB, IHC-P, IHC-F, FCM | Hu, Ms, Rt | bs-0647R |
| CD4 | IHC-P, IF(IHC-P) | Ms, Rt | bs-0766R |
| CD28 | IHC-P, IHC-F, IF(IHC-P), FCM | Hu, Ms, Rt | bs-1297R |
| CD28 | WB | Hu, Ms, Rt | bs-8865R |
| CD40/TNFRSF5 | IF(IHC-P) | Hu, Ms, Rt | bs-2929R |
| CD40L | IHC-P, FCM | Hu, Ms, Rt | bs-1286R |
| CD80 | IHC-P | Ms, Rt | bs-2211R |
| CD86 | WB, IHC-P | Hu, Ms, Rt | bs-1035R |
| CD137 | IHC-P, ICC | Hu, Ms, Rt | bs-2449R |
| CD137L | IHC-P | Hu | bs-3851R |
| CTLA4 | WB, IHC-F | Hu, Ms, Rt | bs-10006R |
| ERK1 + ERK2 | WB, IHC-P, IF(IHC-P) | Hu, Ms, Rt | bs-0022R |
| Galectin 9 | IHC-P | Ms, Rt | bs-0604R |
| HER2 | IHC-P | Hu | bs-2156R |
| ICOS | IHC-P | Hu, Ms, Rt | bs-2583R |
| ICOSL | IHC-P | Ms | bs-4661R |
| IDO | ICC, IF(IHC-P) | Hu, Ms, Rt | bs-15493R |
| IFN gamma | WB, IHC-P, IHC-F | Ms, Rt | bs-0480R |
| IFN gamma | IHC-P | Hu | bs-0481R |
| IL-1 beta | WB, IHC-P, IF(IHC-P) | Hu, Ms, Rt, Dg, Rb | bs-0812R |
| IL-1 beta | WB, IHC-P | Hu, Ms, Rt | bs-6319R |
| IL-2 | WB, IHC-P | Hu | bs-0605R |
| IL-2 | IHC-P | Ms, Rt | bs-4586R |
| IL-5 | IHC-P | Hu, Ms, Rt | bs-1318R |
| IL-6 | IHC-P | Ms, Rt | bs-0379R |
| IL-6 | IHC-P | Hu | bs-0781R |
| IL-6 | WB, IHC-P | Ms, Rt | bs-0782R |
| IL-6 | WB, IHC-P | Hu | bs-4587R |
| IL-6R | IHC-P | Ms, Rt | bs-1805R |

| TARGET | APPLICATION | SPECIES | CATALOG |
|--------------------|---------------------|----------------|-----------|
| IL-6R beta | IHC-P, FCM | Hu, Ms, Rt | bs-1459R |
| IL-10 | WB, IHC-P, E | Hu, Ms, Rt, Ch | bs-0698R |
| IL-13 | IHC-P, FCM | Ms, Rt | bs-0560R |
| JAK | WB, IHC-P, FCM | Hu, Ms, Rt | bs-0908R |
| MHC Class I | IHC-P | Hu | bs-10251R |
| MHC Class II | WB, IHC-P | Hu, Ms, Rt | bs-8481R |
| MMP1 | IHC-P | Ms, Rt | bs-0463R |
| MMP2 | WB, IHC-P | Hu, Ms, Rt | bs-0412R |
| MMP3 | WB, IHC-P | Hu, Ms, Rt | bs-0413R |
| MMP9 | WB, IHC-P, FCM | Hu, Ms, Rt | bs-0397R |
| MMP13 | WB, IHC-P | Hu, Ms, Rt | bs-0575R |
| MMP19 | WB | Hu, Ms, Rt | bs-10058R |
| MMP20 | IHC-P | Hu, Ms | bs-0985R |
| NF-kB p65 | WB, IHC-P, FCM | Hu, Ms, Rt, Pg | bs-0465R |
| NF-kB p65 (Ser536) | WB, IHC-P | Hu, Ms, Rt | bs-0982R |
| NF-kB p105/p50 | WB, IHC-P | Hu, Ms, Rt | bs-1194R |
| NF-kB p110/p52 | IHC-P, ICC | Hu, Ms, Rt | bs-10037R |
| OX40/CD134 | IHC-P | Hu, Ms, Rt | bs-2685R |
| OX40L/CD252 | IHC-P | Ms, Rt | bs-2463R |
| p38 MAPK | WB, IHC-P, ICC | Hu, Ms, Rt | bs-0637R |
| PD-1 | WB, IHC-P | Hu, Ms, Rt | bs-1867R |
| PD-L2 | IHC-P | Hu, Ms, Rt | bs-1868R |
| STAT1 | IHC-P | Hu, Ms, Rt | bs-1317R |
| STAT3 | WB, IHC-P, FCM | Hu, Ms, Rt, Pg | bs-1141R |
| STAT3 (Tyr705) | WB, IHC-P, FCM | Hu, Ms, Rt, Pg | bs-1658R |
| STAT3 (Ser727) | WB, IHC-P | Hu, Ms, Rt | bs-3429R |
| TGF beta 1 | WB, IHC-P | Hu, Ms, Rt | bs-0086R |
| TGF beta 2 | WB, IHC-P | Hu, Ms, Rt | bs-0100R |
| TGF beta 3 | IHC-P | Hu, Ms, Rt | bs-0099R |
| TGF beta 1+2+3 | WB, IHC-P | Hu, Ms, Rt | bs-4538R |
| TNF alpha | WB, IHC-P, IHC-F | Hu, Ms, Rt | bs-2081R |
| TNF alpha (1F6) | IHC-P, IF(IHC-P) | Hu | bsm-0387M |
| TNFR1 | WB, IHC-P | Hu, Ms, Rt | bs-2941R |
| VEGF | WB, IHC-P, ICC, FCM | Hu | bs-0279R |
| VEGF | WB, IHC-P | Hu, Ms, Rt, Sh | bs-1665R |